



# Automizer Alley-Hand™



# Automizer Alley-Hand™

PREMIER SIDE LOADER WITH A STRONGER ZERO KICK-OUT ARM.

Experience a vertical lift automated arm with zero kick-out for minimized spillage, tailored for navigating tight spaces.

The standard 12-foot arm, supported by a 22-inch extension track, offers exceptional reach. Our innovative design eliminates chain wear over time, featuring a robust rack and pinion lifting system powered by two hydraulic motors. This ensures swift movements from curb to hopper and back in under eight seconds.

Unlike competitors, our gripper travels in the down position, eliminating damaging rocking during transit. The track's nylon material combines strength with durability. Operators have precise control thanks to proportional valves, allowing for smooth motions.

The Automizer Alley-Hand™ ASL: Advancing Waste Collection!

## Laying the foundations for a truly exceptional product.

### LABRIE™ INNOVATIONS

With a strong emphasis on innovation, Labrie's engineering team has crafted a comprehensive range of customizable options to cater to even the most stringent customer requirements. We are poised and eager to embrace emerging industry trends and fulfill evolving customer demands. This perpetual cycle of innovation positions Labrie™ as the forefront leader in side loader solutions across North America.

### WEIGHT DISTRIBUTION

Over years of innovation, Labrie™ trucks prioritize ideal weight distribution in all models. Our ongoing objective is to achieve the perfect material balance, ensuring models collect more waste while maintaining the highest legal payload.



ENVIROLINK™ HAS LAID THE FOUNDATIONS FOR A BRAND-NEW ERA IN TRUCK INTELLIGENCE.

An improved multiplex network and analog system, cameras and monitors, scales, diagnostic tools, safety interlocks, alerts, GPS tracking, and more are now packaged in a more precise, reliable, and efficient Smart Collection Package.

Up to 900 lbs/yd<sup>3</sup> compaction

Tapered body for improved compaction

Large 6.5 yd<sup>3</sup> hopper

Proportional joystick, electric over hydraulic

Tailgates ranging from 0 yd<sup>3</sup> to 6 yd<sup>3</sup> based on body capacity

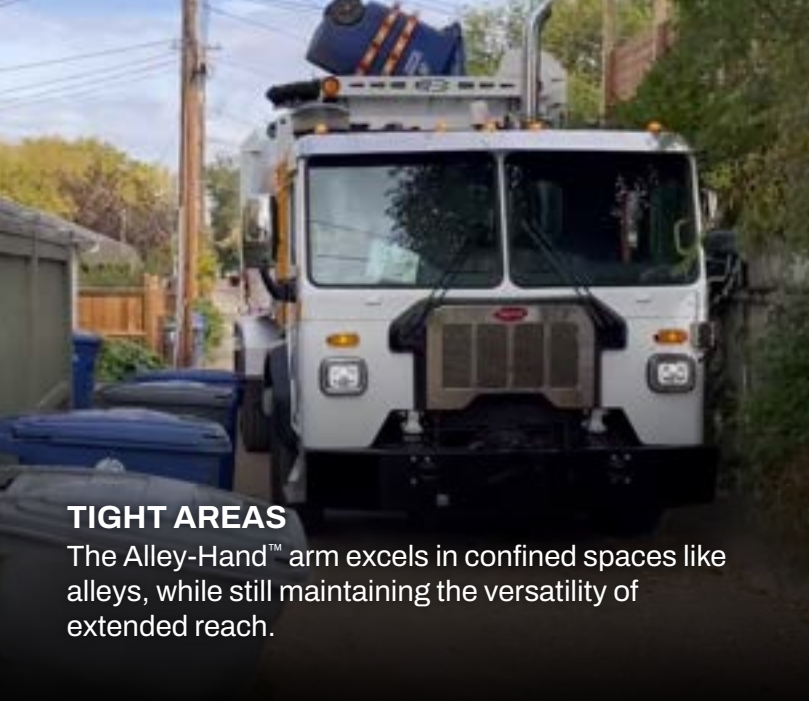
Zinc-plated hydraulic tubing

15 yd<sup>3</sup> to 37 yd<sup>3</sup> body sizes available

**Alley Hand™**

- True Vertical Lift
- Zero Kick-Out
- 12 foot reach
- 550 lb lifting capacity

	AUTOMATED	MANUAL	RESIDENTIAL	COMMERCIAL	DEMOLITION	ORGANICS	ALLEYS TIGHT AREAS	RECYCLING	TIPTO DUMP	FULL EJECT	SPLIT BODY	50>82 DGE	50>96 DGE	50>100 DGE	60>97 DGE	FRAME	ROOF	CAB	TAILGATE	EV
Automizer Alley-Hand™	●		●				●	●	●	●				CNG			CNG	CNG	CNG	●



### **TIGHT AREAS**

The Alley-Hand™ arm excels in confined spaces like alleys, while still maintaining the versatility of extended reach.



### **AVAILABLE ABRASION RESISTANT STEEL**

AR Steel offers strength, durability, and lightweight construction, making it ideal for robust hoppers without compromising payload capacity.



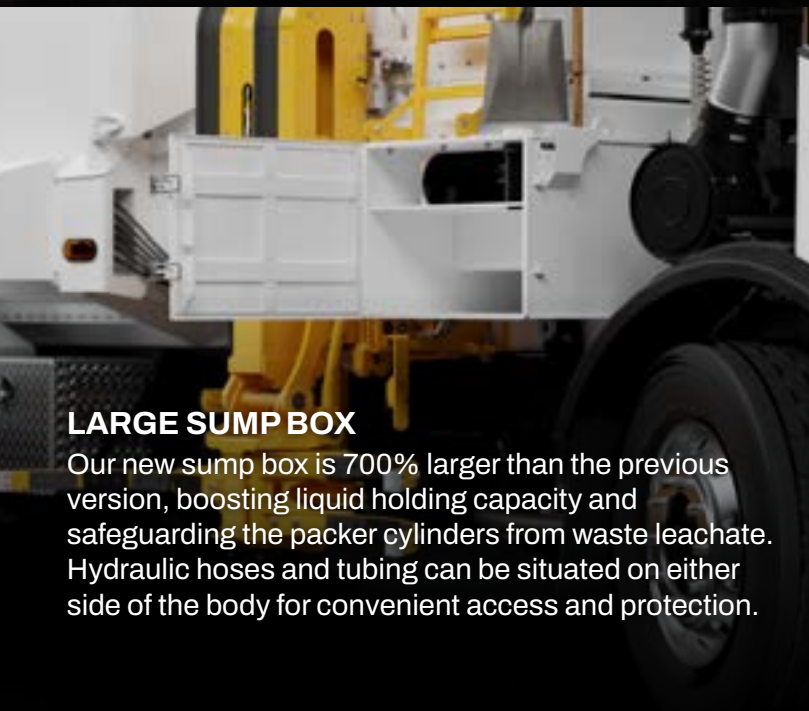
### **TIP-TO-DUMP OR FULL-EJECT**

The Full-Eject system with T-Track Guide extends the lifespan of packer and wear components. A single cylinder handles both packing and full ejection.



### **IN-LINE ARM DESIGN**

Our smooth-operating arms are crucial for maneuvering in tight spaces. They incorporate low "mass-in-motion" and "under hopper" inline designs, reducing torque during dumping for enhanced durability.



### **LARGE SUMP BOX**

Our new sump box is 700% larger than the previous version, boosting liquid holding capacity and safeguarding the packer cylinders from waste leachate. Hydraulic hoses and tubing can be situated on either side of the body for convenient access and protection.



### **SINGLE SHEET OF STEEL ON THE BODY SIDES**

Body walls are crafted from a single piece of abrasion-resistant steel, providing enhanced strength and a seamless surface ideal for graphics. This results in greater structural integrity, eliminating the need for reinforcement posts and reducing weld seams cracking and corrosion.

Body Specifications	
Body Floor	0.157" AR450 175,000psi
Body Sides (lower)	10ga A1011 80,000psi
Body Roof	12ga A1011 80,000psi
Tailgate	12ga A1011 80,000psi

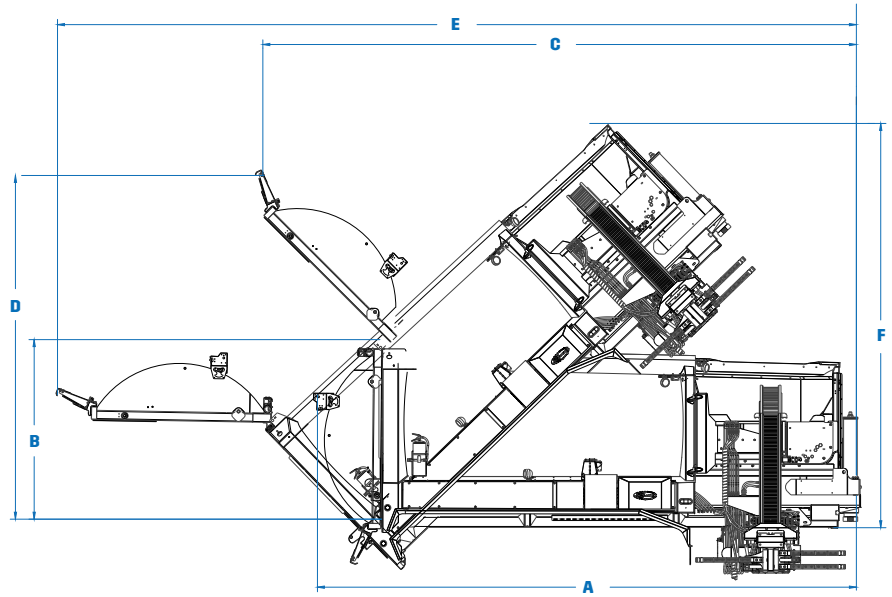
Hopper Size (yd <sup>3</sup> )	6.5
Hopper Floor	1/4" AR450 175,000psi
Hopper Sides (lower)	1/4" AR450 175,000psi

Arm Lift Capacity	550 lbs
Arm Reach	149.5"
Swing out	0"
Arm Controls	Proportional joystick, electric over hydraulic

Body Lifting Cylinder (15yd <sup>3</sup> bodies)	4 stages 6-1/16" bore x 132" stroke
Body Lifting Cylinder (20yd <sup>3</sup> bodies)	4 stages 6-1/16" bore x 150" stroke
Body Lifting Cylinder (27-31yd <sup>3</sup> bodies)	4 stages 6-1/16" bore x 180" stroke
Packer Cylinders	4" bore x 2-1/2" rod x 40" stroke
Tailgate Cylinders	2-1/2" bore x 1-3/4" rod x 39" stroke
Arm Extension Cylinders	1-1/2" bore x 1" rod x 52-15/16" stroke
Grabber Cylinders	1-1/2in bore x 1» rod x 6-3/8in stroke

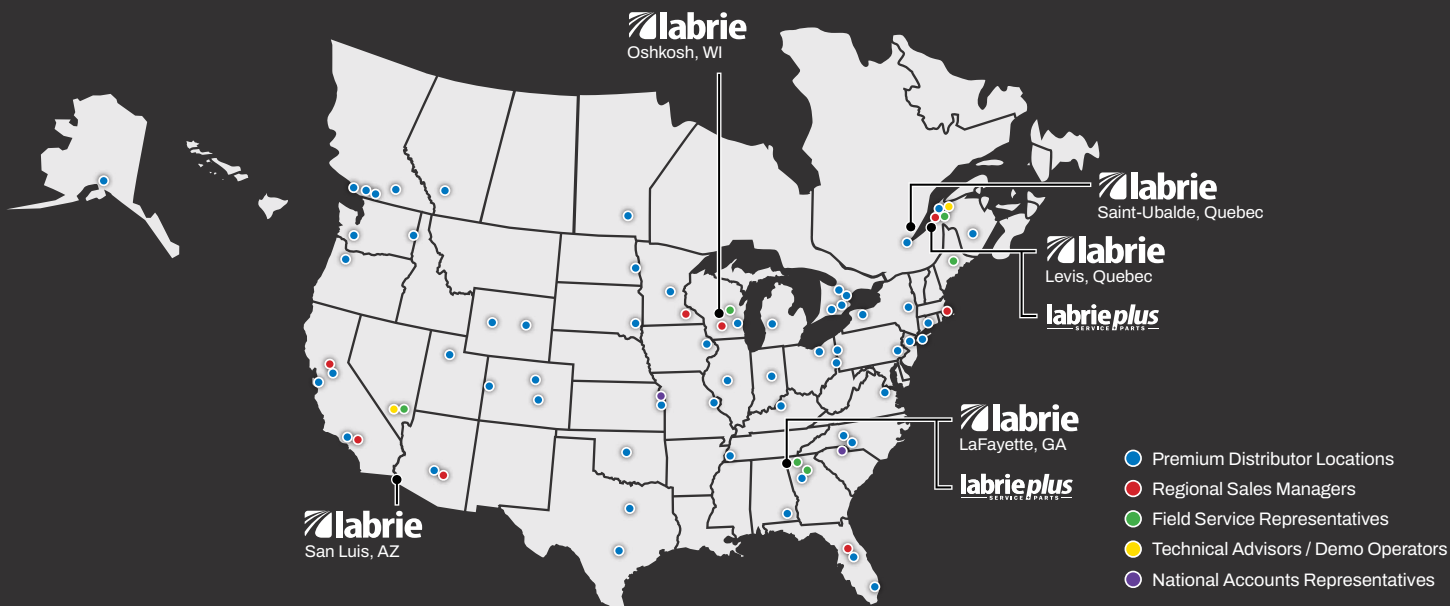
Pump Make & Model	Dual Vane
Pump Capacity	BODY: 20 gpm@700 rpm; ARM: 16 gpm@700 rpm
Max. Operating Pressure	3,000 psi (2,000 psi on single axle chassis)
Oil Reservoir	84-94 gal

Compaction ratio (lbs/yd³)	850 (650 on single axle chassis)
Packer Panel Face Plate	1/4" 100QT 100,000psi
Packer Width	64-1/2"
Packer Height	24"
Packer Stroke	52"

[illegible]

Arm In (96" reach)	2.0 sec @ 700 rpm
Arm In (144" reach)	3.0 sec @ 700 rpm
Arm Out (96" reach)	2.2 sec @ 700 rpm
Arm Out (144" reach)	3.3 sec @ 700 rpm
Arm Up	4.0 - 5.0 sec @ 700 rpm
Arm Down	3.5 - 4.5 sec @ 700 rpm
Grabber Open	1.5 - 2.0 sec @ 700 rpm
Grabber Close	1.5 - 2.0 sec @ 700 rpm

*Note: Specifications subject to change without notice*



## Our North American network is dedicated to quality.

Labrie™ trucks are supported by over 30 top-tier distributors spanning across 50+ sites in the US and Canada, guaranteeing a commitment to driving excellence and providing expert support.

**Pronto**

Opt for the Labrie™ Pronto Stock Program when a pre-built model makes sense. Benefit from expedited delivery, cost savings, and a wide selection of models designed to cater to even the most demanding collection needs.

**Sourcewell**  
Formerly NJPA

With Sourcewell, save time and money by combining the buying power of more than 50,000 government, education, and nonprofit organizations.



**DRIVE EXCELLENCE™**



**labrie**

175-B, route Marie-Victorin, Lévis, Quebec, Canada, G7A 2T3  
Toll Free: 1-800-463-6638 | Telephone: 418-831-8250  
sales@labriegrup.com | www.labriegrup.com



**labrieplus**  
SERVICE PARTS

**United States of America**  
1198 Shattuck Industrial Blvd, Lafayette, GA, 30728  
Toll Free: 1-800-231-2771  
usa.labrieplus.com | partscenter@labrieplus.com

**Canada**  
175-A, route Marie-Victorin, Levis, Quebec, Canada, G7A 2T3  
Toll Free: 1-877-452-2743  
canada.labrieplus.com | labrieplusqc@labrieplus.com